

Aidite®

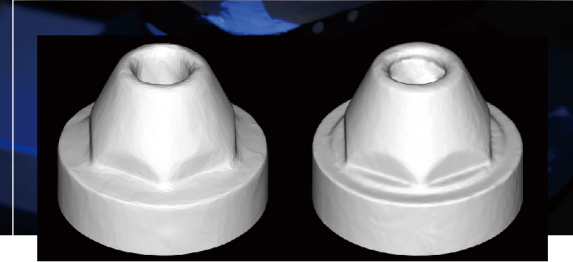
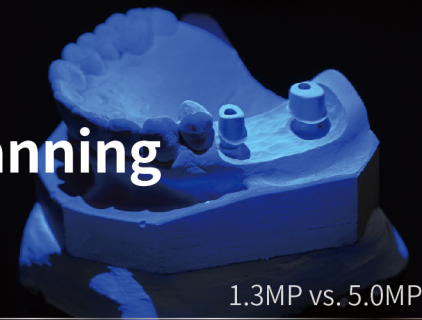
ASDS-MIX

High-end dental scanning | Accurately capture every detail



ASDS-MIX Specializes in Dental 3D Scanning

ASDS-MIX is a high-end dental 3D scanner. With open design and modular structure, ASDS-MIX features fine details, high accuracy and high efficiency to fulfill users' demands of a wide range of dental applications including crown&bridge, implant, bar, etc.



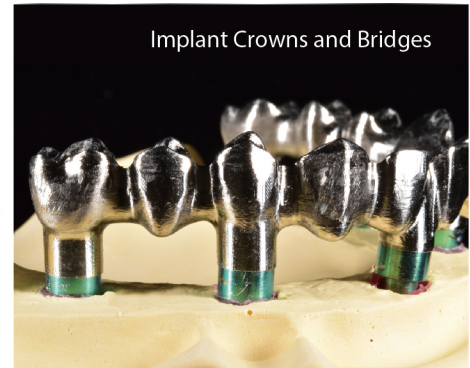
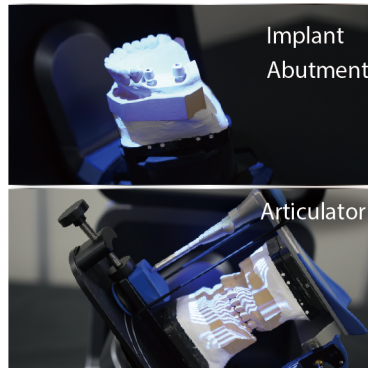
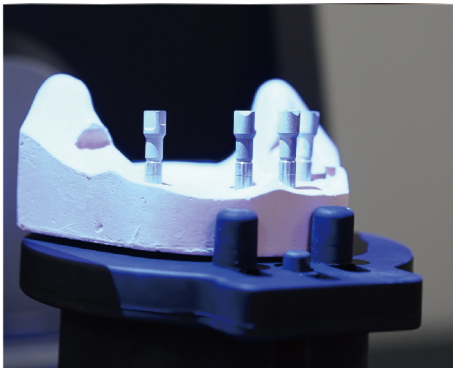
Wide Range of Applications

• Implant 3D Scanning

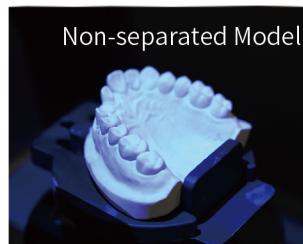
Keep details of edge and surface intact;

Optimize implant scanning process and improve scanning efficiency;

Support not only dynamic and static two scan modes for most common articulators, but also support articulator transfer for Artex, Kavo, SAM and Bio-Art articulators.



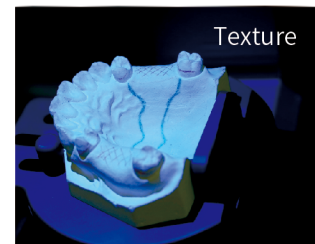
• Non-separated Model



• Triple Tray



• Texture





Ultra-fine Details

Thanks to dual 5.0 MP high resolution cameras, AutoScan-DS-MIX can perfectly capture edge lines of abutments and features of scan bodies.



Modular Design

More convenient for maintenance and possible for future upgrade.



High Accuracy

Scan accuracy $\leq 7\mu\text{m}$ assures reliable scan result.



High Compatibility

Export .stl and .ply format, flexibly integrated in CAD/CAM solutions.



High Efficiency

AutoScan-DS-MIX supports high efficiency scan mode: 13 seconds for scanning a full arch. With All-in-one scan it can improve scan efficiency by approx. 30%.



Intelligent Scan

Integrated with user-friendly interface, one-click scan & intelligent scan, AutoScan-DS-MIX offers intuitive user experience.



Technical Specifications

Model	ASDS-MIX
Camera Resolution	2x5.0MP
Accuracy	≤7μm (ISO12836)
Scan Time	6s for bite scan; 13s for upper/lower jaw scan; 18s for 1-4 dies scan; 33s for 5-8 dies scan; 32s for impression scan*
Articulator Scan	Dynamic/ static ; support articulator transfer
Output Format	STL, PLY
Light Source	Blue Light
Dimension	238(L)×340(W)×447(H) mm
Weight	7.5kg
Interface	USB3.0
Power Supply	DC24V

*The scan speed of impression is under high speed scan mode.

Aidite[®]



Aidite (Qinhuangdao) Technology Co.,Ltd.

Tel : 0086-335-8587898

Fax: 0086-335-8587198

Web: www.aidite.com

Email: info@aidite.com

NMPA ISO13485 CE0197 FDAK111291